



THE PLAY THAT GOES WRONG

HIGH SCHOOL
EDITION

**BY HENRY LEWIS,
JONATHAN SAYER,
& HENRY SHIELDS**

DIRECTED BY BRYAN SCHMIDT

Presented by arrangement with DRAMATISTS PLAY SERVICE
under license from MISCHIEF WORLDWIDE LTD.

PRESENTED BY



FEBRUARY 10 - 26, 2023

WWW.MAGENTATHEATER.COM



Downtown Vancouver

1220 Main St. Ste. 100
Vancouver, WA 98660

Hazel Dell

816 NE 98th Cir.
Vancouver, WA 98665

Hours

Open Daily
11 am - 10 pm

Happy Hour

2pm - 5pm
9 pm - Close



***Best Cocktails & Best Happy Hour
of 2022***

amarostable.com



CAUTION: Patrons are asked to please enter and exit rows 'B' through 'I' from the side aisles only please. Magenta Theater is not responsible for alternative methods of accessing or exiting seats. This is especially applicable to patrons in row 'B'. Do not try to step up through the row 'A' seats, as they are not affixed to the floor in order to accommodate wheelchairs.



PHOTOGRAPHY NOTE: Please turn off cell phones, tablets, etc. Video or audio recording of this performance is strictly prohibited.



THE PLAY THAT GOES WRONG

HIGH SCHOOL
EDITION

Written by Henry Lewis, Jonathan Sayer,
& Henry Shields

Produced by Special Arrangement with DRAMATISTS PLAY SERVICE,
INC. under license from MISCHIEF WORLDWIDE LTD.

Directed by
Bryan Schmidt

Assistant Director
Eli Swihart

Production Manager
Mary Thomas

Set Design & Construction
Kirk Dusenberry & Mark Wood

Set Dresser
Erin Knittle

Costume Designer
Bethie Cummings

Hair & Make-Up Designer
Shaye Eller

Props Design
Michele Glover

Lighting Designer
**Andrea van de
Bruggen**

Sound Designer
Alex Santorufò

Special Effects
Sound Design
Steve Goodwin

Light Board Operator
Luke Dowell

Sound Board Operator
Michael Reid

Violence Coach
David Bareford

*Special thanks to Christian Leuthold and
Melinda Pallotta for the loan of "BOU" the caribou head.*

DIRECTOR'S NOTE



Bryan Schmidt
Director

Sometimes things go wrong...

It's been true of every theater project I've been involved with. Forgotten lines, missed cues, misplaced props, or even exploding gnomes. Each of these issues has the chance to derail a performance.

But that's part of the joy and wonder of live theater isn't it? Most of the time the audience doesn't know that something has gone awry, but you better believe the cast and crew do. They will often exalt in the way that someone covered a dropped line or improvised past a missing sound cue. After all, the show must go on. Figuring out how to keep the show moving in the face of adversity is one of the joys of performance.

It's been eight years since the last time I took on the director's mantle for Magenta. After our son was born, Merilee and I decided to focus on our family. As much as we enjoyed our time in the theater, doing it well is a huge time commitment. But if ever there was a show that would bring us back it was this one. So much fun. And it has been great to see it through the eyes of our son as we have walked through production together.

I hope you will enjoy tonight's show as much as I have. It asks the question of the members of the Cornley Drama Society: "Is there a point at which we should give up? After which the show can't go on?" Watch with us as we witness the opening night of their latest show and see just how far they will go to make it to the end.



THE MURDER AT HAVERSHAM MANOR

DIRECTOR'S NOTE

Welcome to the opening night of the MURDER AT HAVERSHAM MANOR! We here at the Cornley Drama Society are so pleased that you came out to be a part of our latest production. I had been concerned that some of our recent reviews such as A MIDSUMMER'S NIGHTMARE or RENT, HOW DO THEY PAY IT? might put people off from attending our latest show. And really we are so happy to be in this wonderful space. It's true that trouble paying the rent has at times been an issue. This of course forced us to stage BAREFOOT IN THE PARK-(ING LOT) just last spring. So thank you again for supporting Cornley Drama Society. We are sure this murder mystery will keep you on the edge of your seats right to the very end! Oh and do enjoy the salted nuts at intermission... they are quite delicious.



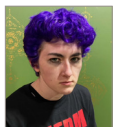
Annie (Stage Manager) has been an integral part of the stagecraft elements for Cornley Drama Society for three seasons now. Beyond her hard work as a regular member of the backstage crew, Annie has also tried her hand at everything from properties, set construction, to even sound design. For the Murder at Haversham Manor she is thrilled to be stepping into the stage managing role, in support of her cousin Simon's first directorial effort.



Jonathan (Charles Haversham) Jonathan has been with The Cornley Society for years now, playing such roles as Sleepy in SNOW WHITE AND THE 7 TALL, BROAD GENTLEMEN, and... others. MURDER AT HAVERSHAM MANOR will be his last performance with Cornley, as he looks toward brighter opportunities elsewhere.



Robert (Thomas Colleymore) Hello and welcome to another display of the finest acting around. Robert hopes you all enjoy the show but mainly him. Being the lead actor of the Cornley Drama Society brings much joy to him but is always looking for the next step.



Trevor Watson is making his theater debut as the lighting and sound operator for *THE MURDER AT HAVERSHAM MANOR*.

This will also be his final show with Cornley or any drama society in general, as he is only doing this due to the "real-world experience" requirement for his degree. He's more than ready to go on tour and do tech for some of the greatest bands around. He hopes you enjoy the show as much as Simon does, since he's currently passionate enough to look over Trevor's shoulder and force him to type this.



Dennis Tyde (Perkins) is the youngest member of the Cornley Polytechnic Drama Society (CPDS).

After failing the tryouts for football (it hurts), cricket (he doesn't understand it), rugby (dear god no), volleyball (can't jump), and basketball (see volleyball), Dennis decided to try the drama society, which has decidedly lower standards (such as breathing). *THE MURDER AT HAVERSHAM MANOR* is his first role. Prior stage credits include (actually, single stage credit is) Sheep in primary school nativity. He is delighted to have a chance to possibly make a friend. (Edit: Change "youngest" to "newest").



Sandra (Florence Colleymore) is thrilled to be gracing the Cornley Drama Society with her presence for her fifth consecutive year. Most recently you may have seen her as Snow White in *Snow White and the Tall, Broad Gentlemen*, or perhaps as Glindy in the Cornley Drama original musical *Wickd*. Sandra has been performing from a very young age, since her mother appeared in *The Crucible* eight months pregnant.



Maxwell Malleargentus Bennett (Cecil Haversham/ Arthur)

Max's breakout role as Sheep #3 in Park Way Primary's Second Grade Christmas Pageant earned the review, "You could do a lot better," -Mother. After a thirty-two year hiatus, he's back at it again! (He had a brief stint in college understudying for the role of Godot, but was eventually cut.) You may recognize Max as the Cornley Drama Society's number one box office volunteer, and "the fastest refunder in the West!" After listening in the lobby for eleven years, he is excited to appear in his first speaking role. Max is also a film buff, having watched "Hamlet" (1948) twenty-eight times and "The Matrix" (1999) thirty times! He is grateful the Society has allowed him to donate such large sums from his recent inheritance to support their work.



Chris Beane (Inspector Carter) senior member Cornley Drama Society, is happy to be returning to the Cornley stage

after an unsuccessful run at many London auditions that left him working odd jobs to make ends meet. Having stressed his marriage to the breaking point he returns to Cornley where he has previously found a modicum of success. Born in Crestfordshire on Phlegm, Chris performed mostly secondary rolls in school as his hair loss began at a very early age. His steady employment has been as a bookkeeper for a local Haberdashery but still hopes to be "discovered" and pursue acting professionally-just please don't mention this to his wife...Favorite roles include *The Old Man in James* and *the Peach*, *Digory in The Lion...* and, of course, memorably as *Ralph the Wretched* in *Susie H.K Brideswell's* brilliant debut play *Temptation and Trouble on Twickenham Heath*.

WHO'S WHO IN THE CAST



Merilee Schmidt (Annie) is Most remembered at Magenta for her role as Jane in PRIDE AND PREJUDICE, Merilee is delighted to be acting again after more than a decade off stage. Having stage managed shows such as THE 50TH and THE 39 STEPS, Merilee empathizes with her character, Annie. Bryan and Merilee saw THE PLAY THAT GOES WRONG in the West End in 2018 and immediately started talking about how much fun it would be to put it on at Magenta. So being on stage for this production is genuinely a dream come true! Merilee would like to thank the Lord for His perfect timing, and her family for all their support.



Anshumaan Bajpal (Stagehand) is a new entrant at Magenta Theatre scene, who is rekindling his interest in theatre from his college days back in India. With this play, he aims to pick up on the nuances of acting and learn from the pros. Outside his tech job, he likes to play Cricket as a part of Oregon Cricket League, which takes up majority of his weekends over the summer.



Hannah Greenlee (Stagehand) has been involved in several plays at Magenta Theater starting in 2009 when she was cast in a production of WIND IN THE WILLOWS. She has also acted in shows at Beaverton Civic Theater and New Century Players. When she's not acting in community theater, Hannah writes and directs plays at her church. She is so happy to be a part of this very fun show!



Cristyn LaChaine (Stagehand) is honored to be a part of this incredible show! Starting with piano at age 7, music is her first love and led her to other instruments such as clarinet, alto/baritone saxophone, guitar, uke, bassoon, percussion, and eventually voice. She discovered her incredible passion for the theatre a few years later and has been acting and stage managing since 2015. Favorite roles include Mona Lipschitz (CHICAGO), Smee (PETER AND THE STARCATCHER), Wendy Jo (FOOTLOOSE), and Teen Ensemble (HEATHERS THE MUSICAL). She would like to thank her Chihuahua Romeo for greeting her every night after rehearsal, and her mom for keeping him company while she's gone.



Raburn Gotter (Trevor) is delighted to be performing with Magenta for the very first time, marking their return to theater after a six-year hiatus. When not on stage, they can be found creating cosplays, drooling over cool animation, and slowly fusing into the plants at their local garden center. Special thanks go to everyone who has supported them in their recent creative endeavors, whether it's been acting or going down in local legend as the resident cryptid. You all rock!



Dustin Effinger (Jonathan) is fresh off Magenta's performance of CHRISTMAS BELLES, making this Dustin's 2nd performance at Magenta Theater. He is grateful to be continuing on with Magenta, and thankful to have the opportunity to work with this cast and crew. He'd like to thank Bryan Schmidt and Eli Swihart for their tireless work bringing this play to life and for allowing him the opportunity to be a part of it.



Rob Wilson (Robert) is thankful to be returning to his second show at Magenta, having recently appeared as Colonel Arbuthnot in 2022's MURDER ON THE ORIENT EXPRESS. He graduated from Eastern Oregon University with a degree in Theatre Arts. He is thankful for the wonderful support from his loving wife Danielle, and his wonderful cats Nala and Kuzco.



Tony Provenzola (Dennis) is a longtime member of Magenta, but new to Cornley. He does, however, feel fairly well qualified, as he has a long history of missing entrances, skipping lines, and dropping props, as well as being a known maladroït. When he's not wreaking havoc on stage as an actor or improviser, he can be seen (or hopefully not seen) causing chaos in the tech booth, making mischief on backstage crew, or derailing drama as a volunteer in various other capacities. Rest assured, his bumbling is not limited to the theater, but is well practiced with his family, who is happy to support him in getting out of the house.



Piper Supplee (Sandra) is elated to be performing in her first production with Magenta. A recent arrival from Los Angeles, her previous credits include Roxie in CHICAGO, Babette in BEAUTY AND THE BEAST, and a variety of indie short and feature films which no one's ever heard of. When not prancing around on stage she works as a Legal Assistant for a disability law firm. She wants to thank the director as well as the cast and crew for all their hard work, infectious joy, and imperviousness to injury.



Matt Newport (Max) is no stranger to the Magenta stage, but the statute of limitations is about to run out so his previous appearances won't count. When not goofing off in this show, he's a digital paper-pusher for disability insurance claims. He is also an avid gamer, movie watcher, and music maker (having performed in such venues as "The Shower", "The 4-Door Lounge," and "The Barnes & Noble Gift Wrapping Fundraiser"). After six years in Texas, he's very grateful to return to wonderful and welcoming parents and friends.



Bob Lovitz (Chris) is thrilled to be a first-time Magenta performer and so grateful to be working with such a wonderfully talented ensemble! Bob feels incredibly fortunate for the opportunity to return to the theatre, having recently retired from a fulfilling career as a physician in Portland. Trained in NYC as an actor many moons ago, he subsequently toured the U.S. and Australia in rotating repertory with John Houseman's Acting Company. Bob appeared recently as Judge Danforth in THE CRUCIBLE at Twilight Theatre. Thank you to Sarah and Pat and much love always to Laura, Ben, and David!

FRIENDS OF MAGENTA

Magenta Theater is an independent non-profit organization funded primarily by donations. We are incredibly grateful for the continued support we receive from our community and the following *Friends of Magenta*:

Memorial Funds

- In Honor of Cindy Kidder
- In Memory of Pam Hereford
- In Honor of June & Dennis Stevenson, Leeds Art Center, UK

Director (Contribution of \$1000+)

- Tony & Amy Provenzola
- Cinda Connelly
- Mellie Hock
- Liz Grauer
- Davidson & Associates
- Mary Thomas
- David & Stephanie Roberts
- KC Cooper & Jim Hart
- Mark McCollum & Stacen Tyskiewicz

Assistant Director (Contribution of \$500+)

- Anonymous
- David & Sharon Houck
- Ester John
- Ray & Lisa Alexander
- Scott & Sherry Brookshire
- Richard Roberts
- Stephen Early & Mary Shepard
- Steve & Katie Goodwin
- Tanya Gray
- The Mocks
- Gina & David George
- Jeffrey Hereford
- Gail Czech
- Vancouver Real Estate Photography

Leading Role (Contribution of \$250+)

- Beverly Vogler
- Elizabeth West
- RealVest Corporation
- Rebecca Hoffman
- Steve Thalberg
- Matt & Jennifer Thoreson
- Virginia Lensing
- Ken Spurlock
- Kristen Bennett
- Nancy Kingston
- Nancy Townend
- Sheri Adams
- Stephanie Green
- Glen & Mindy Rees
- Peter & Patti Wonderly

Understudy (Contribution of \$100+)

- Anonymous
- Barbara Marzean
- Carole Palmer
- Chad Harvison
- Chris & Jennifer Gilbert
- Elizabeth Peters
- Jacqueline Allen-Bond
- Jayne Liu
- Jennifer Long
- Linda Wallers
- Karen Hobbs
- Lori Comstock
- Marcella Laasch
- Marj Casswell & Walter Griffith
- Martha Hancock
- Mary Ann & Dan Edelstein
- Nancy Goering
- Robert Baughman & Karen Johannes
- Susan Ford
- Teri McCrary
- Tim Crookham
- Carol Johnson
- Heather Greiff
- Connie Barringer
- Doug & Gail Tuck
- Jason Litts
- Kay Jamison
- Lauren Scher
- Marilyn & Larry Bone

To become a "Friend of Magenta" visit:

MAGENTATHEATER.COM/DONATE

To Sponsor a Show visit:

MAGENTATHEATER.COM/SPONSOR-A-SHOW



Stop in and visit us at our new location



@nichewinebar



nichewinebar.com



360-253-1742

**Riverview Tower,
900 Washington St
#130, Vancouver,
WA 98660**

YOUR AD HERE!

Contact us to advertise with
Magenta Theater!

david.roberts@magentatheater.com



**2023
SEASON**

2/10-2/26

**THE PLAY
THAT GOES
WRONG**

HIGH SCHOOL
EDITION

Written by
**HENRY LEWIS,
JONATHAN SAYER,
& HENRY SHIELDS**

4/14-4/30

FLOORED!

Written & directed by
local playwright
KC COOPER

8/11-8/27

Amélie
THE MUSICAL

Book by **CRAIG LUCAS**
Music by **DANIEL MESSÉ**
Lyrics by **NATHAN TYSEN &
DANIEL MESSÉ**

10/13-10/29

**SIX DANCE
LESSONS
IN SIX WEEKS**

Written by
RICHARD ALFIERI

12/1-12/17

THE WICKHAMS
**Christmas at
Pemberley**

Written by
**LAURA GUNDERSON
& MARGOT MELCON**

2023 Season Tickets On Sale Now!

Season tickets save you money and get you priority seating with the option to reserve your seats before they are available to the general public! Our Season Sampler package offers priority ticketing for 3 of the 5 main stage shows, and the Season Experience offers priority ticketing for all 5 main stage shows!

Visit MagentaTheater.com/season-tickets